

360 EAST 22ND STREET

DATA CENTER OPPORTUNITY

23,789 RSF



<http://www.360e22ndstreet.com/>



PLUG AND PLAY DATA CENTER OPPORTUNITY

GENERATOR CAPACITY

(6) MW overall capacity

UPS

Phase I: 1,445 kVA (535 kVA critical)

Phase II: 1,960 kVA (980 kVA critical)

POWER

2N Power distribution to each cabinet for the entire suite

CABINET COUNT

Phase I: 142 (space for 82 cabinet expansion)

Phase II: 172

DENSITY PER CABINET

Configured for 15kW per cabinet

UTILITY SERVICE

- Three primary utility services feeding
- Phase I: (1) 1,000 kVA transformers
- Phase II: (4) 750 kVA transformers
- Power fed through two diverse service entrances from two substations

COOLING

- Onsite packaged chilled water plant with N+2 redundancy and stored water cooling
- Total Capacity: 1,000 chilled water plant
- Phase I: 270 tons installed
- Phase II: 500 tons installed

CONNECTIVITY

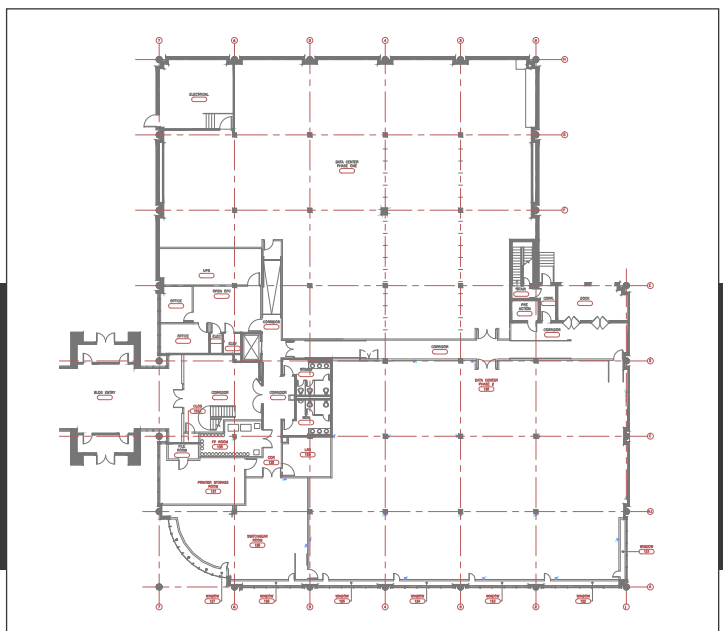
- AT&T, Verizon and Zayo with two diverse service entrances
- Fiber to 350 E Cermak and CME Aurora

FIRE SUPPRESSION

- Vesda early response smoke detection
- Phase I: Pre-Action sprinkler system
- Phase II: HI-FOG Water Mist and Ecaro Clean Agent Suppression Systems

SECURITY

- 24/7 manned security
- Kevlar reinforced exterior walls
- Exterior video cameras





For leasing information

STEVE FLACHBART

steve.flachbart@am.jll.com

+1 773 304 4112

